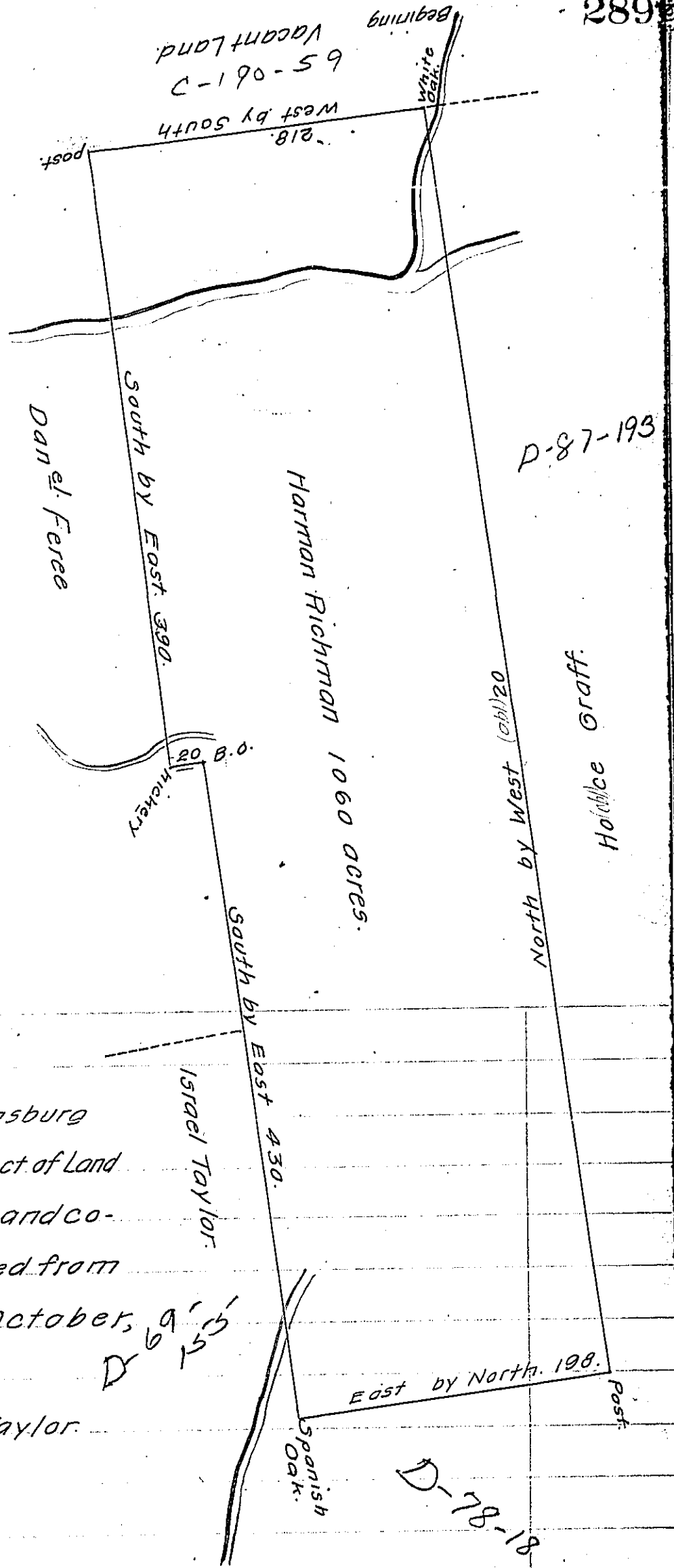


No. Sharpless.



Harman Richman's Land in Strasburg  
 in Chester County Being part of a Tract of Land  
 that was survey'd to John Bundely and co-  
 mpany in the year 1710 and Devided from  
 the Rest the twenty fourth of October,  
 in the Year, 1716.

Isaac Taylor

IN TESTIMONY that the above is a copy of the original remaining on file in  
 the Department of Internal Affairs of Pennsylvania, made  
 conformably to an Act of Assembly approved the 16th day of  
 February, 1833, I have hereunto set my Hand and caused  
 the Seal of said Department to be affixed at Harrisburg,  
 this thirty first day of May, 1910.

*Henry Houch*  
 Secretary of Internal Affairs.